



Product designation				Switch disconnecter
Product type designation				GA
Number of poles	Nr.			3
Operating voltage type				AC
<b>Contact characteristics</b>				
IEC Conventional free air thermal current I <sub>th</sub>	A			80
Rated insulation voltage U <sub>i</sub> IEC/EN	V			1000
Rated impulse withstand voltage U <sub>imp</sub>	kV			8
Operating current I <sub>e</sub>				
AC21A	400V	A	80	
	500V	A	80	
	690V	A	80	
AC22A	400V	A	80	
	500V	A	80	
	690V	A	80	
AC23A	400V	A	80	
	500V	A	63	
	690V	A	47	
Power dissipation per pole max	W			2.6
Rated operational power AC23A	400V	kW	45	
	690V	kW	45	
Conditional short-circuit current (rms)	kA			50
Short-circuit protection with fuse	Class/A			gG80
Making capacity AC23A 400V	A			1250
Breaking capacity AC23A 400V	A			1000
Mechanical life	cycles			30000
Electrical life AC21A	cycles			30000
<b>Mechanical features</b>				
Operating position	normal allowable			Vertical plan Any
Fixing				Screw / DIN rail 35mm
Terminals	type			Pillar
	width	mm	12.4	
	height	mm	10.4	
	screw			M8
	tool			Metric Allen key 4
Tightening torque for terminals				

min	Nm	5
max	Nm	6
min	Ibin	45
max	Ibin	54

Conductor section

IEC min	mm <sup>2</sup>	4
IEC max	mm <sup>2</sup>	70
AWG/kcmil min		12
AWG/kcmil max		1

Ambient conditions

Operating temperature

min	°C	-25
max	°C	55

Storage temperature

min	°C	-40
max	°C	70

Max altitude

m	3000
---	------

Resistance & Protection

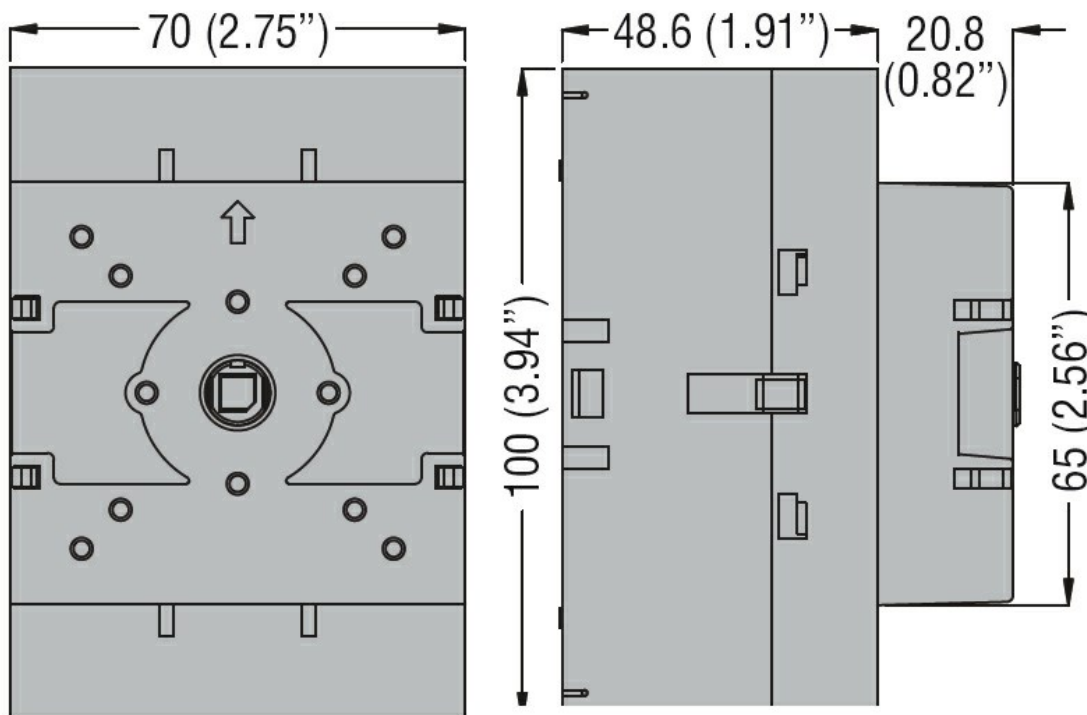
Frontal IP degree

IP20

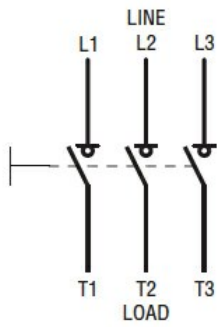
Pollution degree

3

Dimensions



Wiring diagrams



### Certifications and compliance

#### Compliance

CSA C22.2 n°4

IEC/EN 60947-1

IEC/EN 60947-3

UL98

#### Certifications

CCC

CSA C22.2 n°4

cULus according to UL98

EAC

### ETIM classification

ETIM 8.0

EC000216 -  
Switch  
disconnecter